

This exhibit continues an eight-year tradition at the Edison Arts Society to host an exhibit that features the "Gardens of the Garden State".

This year, we have designed the exhibit to allow NJ residents to submit work inspired by a garden and created in any medium. The work will be juried from actual work by the GGS Committee, and those accepted will be hung in the Edison Municipal Building.

Limitations:

- Open to every New Jersey resident, at least 18 years old & EAS interns.
- Open to works not previously shown at any EAS venue, other than the Art in the Garden Tour.
- Only works on walls can be submitted. Sculpture is welcome, but only if hung.
- Work must be no smaller than 11"x14" and no larger than 72" in any direction.
- Work that is sold in the course of the exhibit, will need to be replaced with a work of comparable size and quality by the artist. The EAS will retain 25% of all sales.

Edison Arts Society & the Township of Edison will be diligent in the security of the exhibit space but will not be liable for any damage of any kind. Insurance coverage will be the responsibility of the exhibiting artist.

Signature _____

Date _____



Edison Arts Society
340 Raritan Center Pkwy.
Edison, NJ 08837

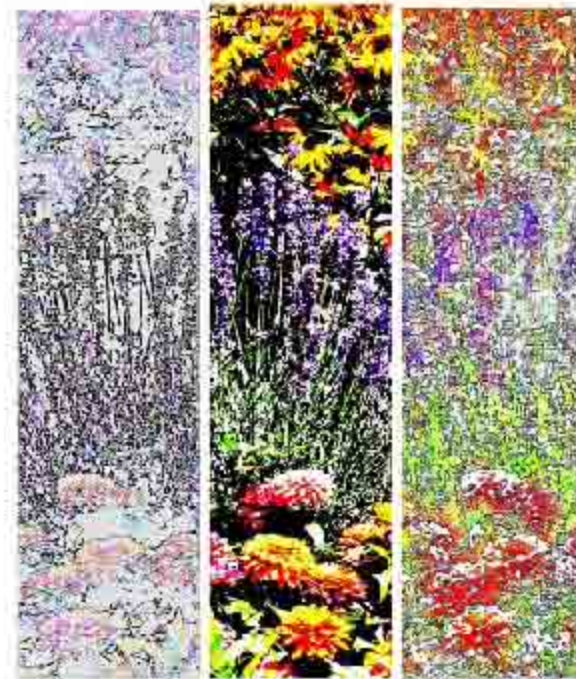
Timeline:

Fri., April 10, 2009
Submission Form
& Entry Fee
Due at EAS Office

Thurs., June 11, 2009
Work Delivered
to 2nd Fl.
Municipal Building

Thurs., Aug. 27, 2009
Reception 5-9pm

Gardens
of the Garden State
Exhibit
2009

The title graphic features the word "Gardens" in a large, elegant, black cursive font. Above the letters are several vibrant, colorful flowers, including chrysanthemums in shades of orange, yellow, pink, and red. Below "Gardens" are the words "of the Garden State" in a smaller, black serif font, followed by "Exhibit" and "2009" in a large, bold, black serif font.

Gallery of the
Edison Arts Society
June, 2009 - August, 2009

Step 1.

SEND:

__Entry Form

__Entry Fee \$25 (members \$15) for
up to 3 entries
checks payable to Edison Arts Society

__Disclaimer Signed

FRIDAY, APRIL 10, 2009

mail to:
Edison Arts Society
340 Raritan Center Parkway
Edison, NJ 08837

Step 2.

BRING

Actual artwork**
(framed and ready to hang)

to:
the Gallery Space on second floor
Edison Municipal Building
Edison, NJ 08820

THURS., JUNE 11, 2009
10 am--Noon

**Jurying will be done from the
actual artwork.
Work delivered **MUST BE the
work submitted on the entry form.

Questions or concerns:
Call Anne Redlin,
Executive Director,
1.908.753.ARTS

ENTRY FORM

Entry 1 Title _____

Medium _____

Size _____

Price _____

Entry 2 Title _____

Medium _____

Size _____

Price _____

Entry 3 Title _____

Medium _____

Size _____

Price _____

Artist _____

Address _____

Phone _____

E-mail _____

PROSPECTUS



**ARTISTS ARE
ENCOURAGED
TO SUBMIT WORK IN
ANY MEDIUM—**

*PAINTING, COLLAGE,
SCULPTURE (FOR THE
WALL), PHOTOGRAPHY,
DIGITALLY-
MANIPULATED IMAGES,
BOTH REALISTIC AND
ABSTRACT—*

**THAT USES THE
GARDEN AS A POINT
OF DEPARTURE.**

*This is a different structure from
what this exhibit has used in the
past, so please read this prospectus
carefully, and
follow the directions exactly.*